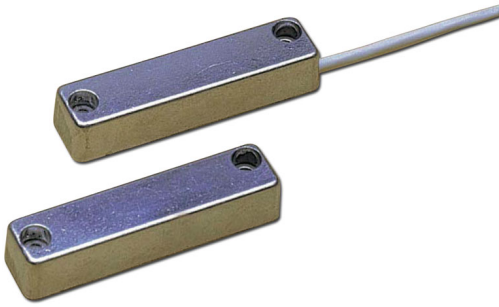


DEM-60-G2 DEM-60-G2

MAGNETIC CONTACT OF MID POWER SUITABLE FOR METALWORK

FEATURES

- Magnetic contact of mid power
- Suitable for metalwork
- Aluminum case with electro polish finish
- Aperture operative distance Y over non ferromagnetic material of 55 mm
- Closure operative distance Y over non ferromagnetic material of 33 mm
- Aperture operative distance Z over non ferromagnetic material of 65 mm
- Closure operative distance Z over non ferromagnetic material of 33 mm
- Side operative distance X of 20 mm
- Operative distance over ferromagnetic a 25% lower
- Alnic 5 magnet
- 4x0,18 cable hoose of 2 meters
- Working temperature 30°C ~ +70°C
- Contact dimensions: 72 x 17 x 14 mm
- EN501312-6 Grade 2 Class III



KEY FEATURES

- Magnetic contact of mid power suitable for metalwork
- Aluminum case with electro polish finish
- Aperture/closure operative distance Y of 55/33 mm
- Aperture/closure operative distance Z of 65/33 mm
- Alnic 5 magnet
- EN50131-2-6 Grade 2, Class III